



Mechanical Solutions

Where design, material and
industry meet

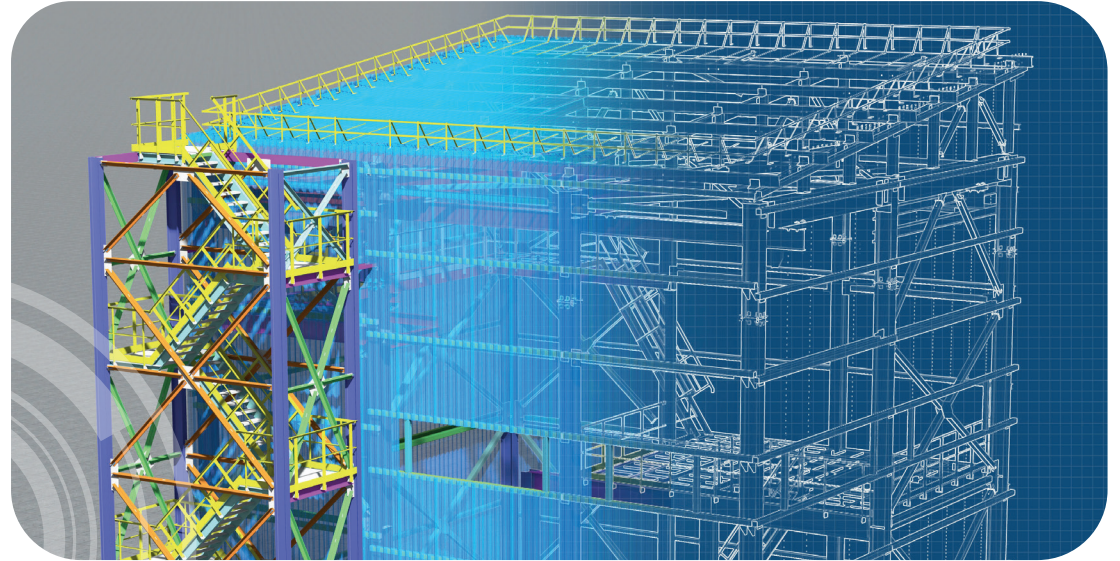


Mechanical

Mechanical Solutions

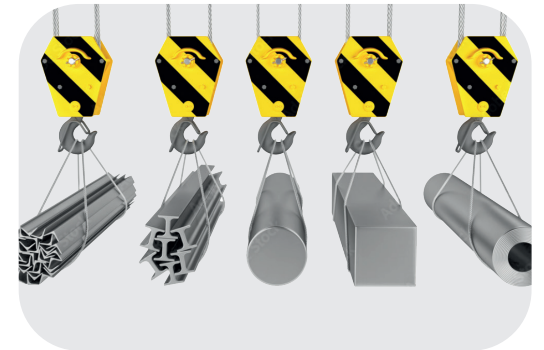
Whether you're building or upgrading a production process, we understand that the demands of production and manufacture are essential drivers. Our dedicated fabrication workshops and expert installation team ensure the job gets done safely, on time, within budget and with minimal site disruption.

By combining our in-house technical ability and wealth of experience, we really can take care of everything for your whole project lifecycle - from initial consultancy, design, manufacture and assembly, through to testing/certification, installation, commissioning and maintenance. We work closely with our Electrical and Automation divisions to deliver full turn-key solutions.



"The project that Actemium Mechanical have delivered has been a success on many levels and the end result far exceeded our expectations. As a result of the innovation shown within this project the company have been presented with an R&E award for 2020. We look forward to continued project success with Actemium"

Engineering Manager - Resources & Energy



Our high standards and specialist expertise, means you can be confident in the compliance, safety and structural integrity of fabrications designed, manufactured and installed by Actemium.

You can trust that health, safety and environmental considerations are at the heart of everything we do, ensuring you are provided with a safe, reliable and energy-efficient solution to optimise your industrial processes.



Our Areas Of Expertise



Structural Steel Fabrication

We can provide structural calculations and design for fabrication. Our design office uses 2D and 3D techniques to support general arrangement and detailed design. We can even provide a detailed scanning of your facility if needed, which is a fast and cost-effective way of gathering the detail required before design or modelling.

Our workshops can produce a factory controlled fabrication to cover people and load bearing structures with all necessary legal & regulatory requirements.



Modular Process Skids

Modular Process Skids offer a simple, flexible, cost-effective solution to creating production sites. With the self-contained process system built into a frame (or 'module'), they reduce costs by being simpler to transport and integrate, meaning faster time to production.

The high-quality skids are designed for your specific needs and offer increased flexibility and control, being easy to relocate if needed.



Specialist Process and Services Pipework

Our teams are experts in specialist process and services pipework, all designed and fabricated in our workshops and installed on-site.

We deal with all general services pipework, including hot and cold water, steam and condensate, nitrogen, and gas. We also specialise in pipework for high-pressure and highly viscous systems, including specialist jacketed and dual-jacketed systems for additional temperature control.

Our highly competent team of coded welders have a wealth of skills, including producing highly complex valve matrix and CIP systems. We can also design and manufacture a range of hoppers, tanks and vessels according to your needs.



Our Areas Of Expertise



Machinery Installation and Lifting Services

We can take care of all aspects of your machinery set down or relocation, from planning through to execution. Whether it's entire factory, process line or single machine, we use our extensive experience to plan, supervise and undertake both simple and complex lifting operations for your site installation.



Our network of dedicated professionals provides the most effective and tailored solutions. We're committed to safeguarding and reducing risk, and all work is carried out in accordance with required legislation.. Whatever your requirements, you can trust that all projects will be conducted in a safe, controlled and methodical manner.



Site Establishment, Residency & Support

We establish a safe, secure site that allows us to act as an extension of your own on-site engineering team. Our years of experience in doing just this means we understand your processes and the challenges you face, and we work in a way that minimises downtime and reduces mobilisation costs. Being resident on-site, with our offices, cabins and stores established, adds value for you as we become embedded with your people, who can call on us as needed.

Of course, wear and tear is an unavoidable part of any production process. Luckily, a speedy response to a call for help is in Actemium's DNA. We are agile and quick to react, and our multi-skilled team has flexible availability on site to ensure you get the support you need, where and when you need it.



Site Installation and Mechanical Services

Our expert engineers are motivated, enthusiastic, highly skilled and adaptable, with experience delivering projects in various industry sectors. To save you time, money and disruption, we assemble, test and document equipment on our premises wherever possible before a steel-toe-capped boot sets foot on your site.

There are times when some on-site fabrication or final assembly is necessary, which is when our extensive experience setting up portable or semi-portable site-based facilities comes into play. At all times, our fully qualified and experienced CDM-compliant project managers and site supervisors model the safety excellence embedded in our culture.



Actemium UK

Actemium has multiple centres of excellence spread across the UK each empowered to operate with autonomy. With an embedded culture of transparency and encouragement to think like our customers, we deliver safe, reliable and sustainable projects through our incredible people.

Spin the Actemium Wheel to see the diversity we can offer in competence and market sectors. We exist to help our customers improve their performance & competitive advantage.

Why our repeat business is so high

- We are a people business
- We are honest & do the right thing
- We put the customer 1st
- We innovate
- We share success
- We do what we say we will
- You can trust us

