



# Vehicle Test Systems

Improve productivity & quality with robust, reliable test systems





# Vehicle Test Systems

We know there's no room for error when it comes to vehicle development into manufacturing. Even the smallest errors can mean money down the drain in the time-sensitive production environment. As the electronics in vehicle technology get ever more complex, you need robust, reliable test systems to ensure everything is 'right first time' before you reach the end of the production line.

Our reliable end-to-end solutions, combined with our speedy support response, have made us a trusted long-term partner for vehicle manufacturers worldwide. For decades now, our high-quality test systems have helped our customers improve the performance of their production facilities, leading to reduced cycle time, increased output, improved quality and optimised uptime.

Comprehensive and fully auditable, our vehicle test systems optimise the manufacturing process and remove the risk of human error. From data capture, reporting and ECU programming through to rectification, rolling road and end-of-line testing, we ensure the very best hardware and software for your needs.



## Robust Data Network & Connectivity is key. We can help.

Any production line today, no matter if it assembles cars, vans, trucks, tractors, boats or even aeroplanes, needs a reliable, robust network for guaranteed system availability. We have a range of data network services to assist you, including passive network infrastructure deployment, Wi-Fi, Power over Ethernet, fibre optic, and private mobile networks.

Find out more at [www.actemium.co.uk/electrical/data-networks-wifi](http://www.actemium.co.uk/electrical/data-networks-wifi)



## Advise, Design, Build and Maintain

No two customers, production line, or approach to vehicle testing is the same. We are renowned for working closely with you in developing test functionality and our expert team is experienced in understanding the architecture of a vehicle way before it hits the production line. We do the thinking for you and give best advice to ensure we de-sign and build the most reliable test solution, making it easier for us and you to maintain.

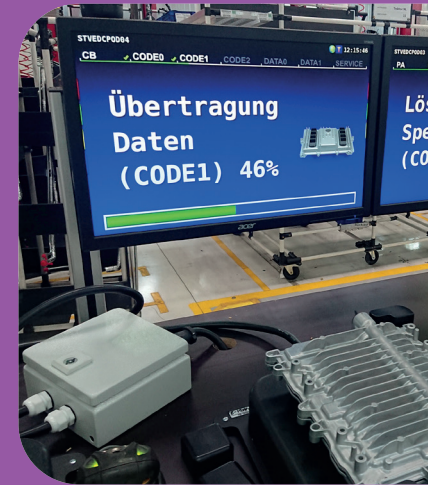
- At your R&D facility or a secure Actemium location
- From prototype stage, confidentiality is assured
- Static or portable tester options available
- Installation and commissioning completed remotely for maximum friendliness to the environment or in person for maximum friendliness face to face



## Now for the techy bit...

Our renowned STRATUS software suite is a fully scalable solution specifically engineered to meet the demands of today's harsh production environment. From a single standalone tester to a server-based fully networked solution with as many testers as your process demands, we design the best fit for you.

- Web-based reporting tool for quality assurance
- Ultimate flexibility around the production facility via portable test hardware
- Remote real-time view & control of individual testers on the production line
- Secure test results date/time stamped for the ultimate audit trail
- Seamlessly interfaces with 3rd party systems



## Support and Training

We can be as hands-on or as hands-off as you like, it's up to you. If it's peace of mind you're after, then remote support is available 24/7 and we can take care of any changes and tweaks for you. Or, if you fancy being more self-sufficient, we can train your engineers on our software platform so you can let them fly.



## Telematics

For telematics to optimise the farmers work in the field, we need to get it right on the production line. We have unparalleled experience in production line programming and configuration of agricultural vehicle telematics. And as this technology becomes increasingly complex, our software evolves alongside it, future-proofing your production line.

- Customised to your requirements
- Configured within your facility
- Downloads activation through GPS



# Global Reach, Local Support: Actemium's Comprehensive Vehicle Testing Solutions



**Birmingham, UK HQ**



**Vehicle Testing Solution Deployment**



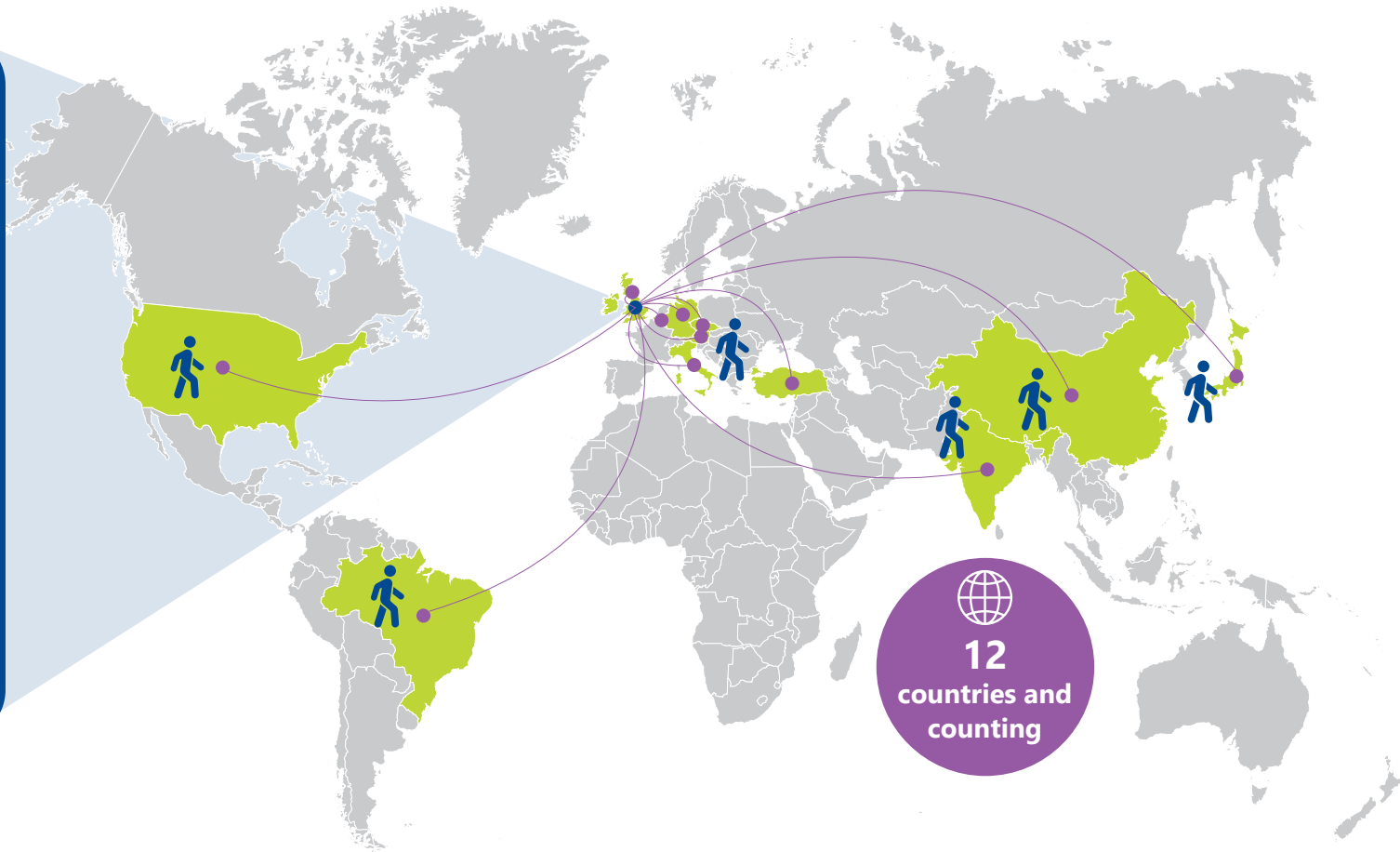
**Training and Support**



**VPN (Environmentally friendly)**



**Deliver locally**



*"I manage over 25 global manufacturing sites around the world. Actemium has demonstrated themselves as best in class regarding vehicle controller programming and controller configuration. They excel at fixture design with safety and error-proofing, with thought toward flexibility and scalability. The robust test software design allows for customizable screens with clear graphics to help the operator through the process. Continued support for our factory locations is handled quickly and thoroughly, independent of the time-zone, and with the upmost respect. I am very grateful for the team at Actemium for all the support they provide to our manufacturing locations."*

**Manufacturing Integration Project Manager**



# About Actemium UK

Actemium has multiple centres of excellence spread across the UK each empowered to operate with autonomy. With an embedded culture of transparency and encouragement to think like our customers, we deliver safe, reliable and sustainable projects through our incredible people.

Spin the Actemium Wheel to see the diversity we can offer in competence and market sectors. We exist to help our customers improve their performance & competitive advantage.

## Why our repeat business is so high

- We are a people business
- We are honest & do the right thing
- We put the customer 1st
- We innovate
- We share success
- We do what we say we will
- You can trust us

*"Our reputation relies on us promising and delivering the highest quality to the customer. Thanks to the programming benches and the outstanding customer support from Actemium, we can keep our high standards and we deliver our high-quality products to the customer."*

**Electronic System Engineer**

